



SUDAN HUMANITARIAN FLASH APPEAL

JULY 2025



ibc.org.tr



BACKGROUND & CONTEXT:

This appeal, developed by IBC in July 2025 was written to appeal for support in response to the escalating humanitarian crisis in Sudan.

Since the outbreak of conflict in April 2023, millions of people have been affected by widespread violence, displacement, food insecurity, and the collapse of basic services. Today, Sudan faces one of the largest humanitarian emergencies in the world. following the eruption of conflict between the Sudanese Armed Forces (SAF) and the Rapid Support Forces (RSF) in April 2023. What began as a power struggle in the capital, Khartoum, has quickly escalated into a nationwide humanitarian catastrophe, pushing millions of innocent civilians into unbearable suffering.

Today, over 25 million people, more than half the population, are in urgent need of humanitarian assistance. The country is experiencing massive internal displacement, widespread hunger, the collapse of health and education systems, and the breakdown of law and order.



HUMANITARIAN IMPACT:

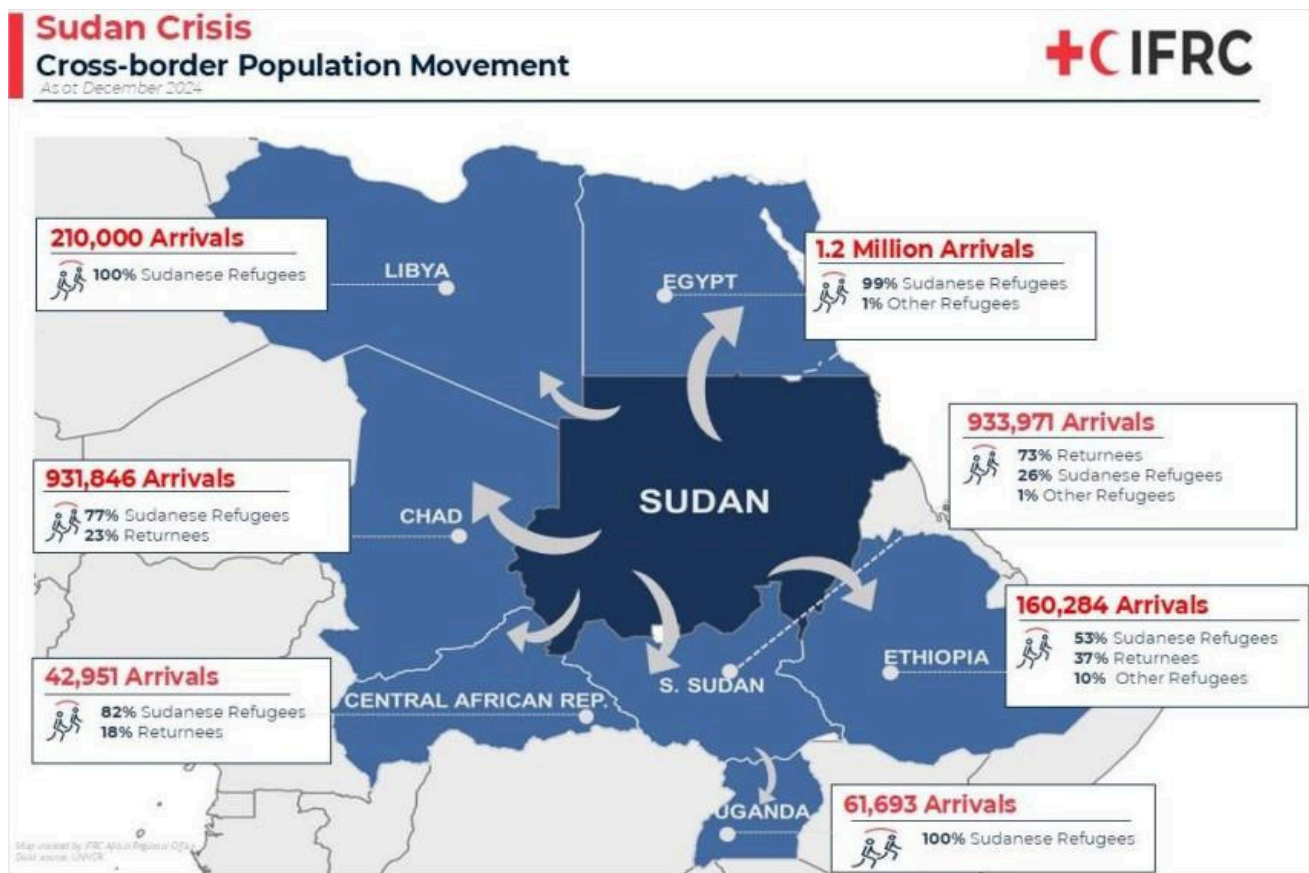
The consequences of this conflict are staggering:

- **Over 10.7 million people displaced** – the largest internal displacement crisis globally, including those seeking refuge in neighboring countries such as Chad, South Sudan, and Egypt.
- **18 million people facing acute food insecurity**, with over 5 million at emergency levels (IPC Phase 4).
- **6 million children** under the age of five at risk of malnutrition.
- **Critical shortage of medical supplies** and a health system on the brink of total collapse.
- **Widespread gender-based violence**, with women and girls especially at risk in IDP camps and conflict zones.
- **Restricted humanitarian access** in many regions due to insecurity and bureaucratic impediments.



The situation continues to deteriorate, and with the rainy season approaching, conditions for displaced populations — many of whom are living in makeshift shelters or open areas — are expected to worsen further.

The conflict in Sudan persists after 2 years leading to mass displacement, including 3.5million people taking refuge in countries neighbouring Sudan. The scale of population movement within Sudan and across borders has made it the largest displacement crisis in the World. As of December 2024, there were around 1.2 million arrivals in Egypt, 931,846 in Chad and 933,971 in South Sudan, 210,000 in Libya, 160,284 in Ethiopia, 61,693 in Uganda and 42,951 in Central African Republic (CAR). The new arrivals include refugees, asylum seekers and refugee returnees. These forcibly displaced people undergo extremely perilous journeys to reach places of refuge, often selling their remaining assets to afford the transportation costs.



OUR RESPONSE AND COMMITMENT

IBC is actively responding to the crisis through a coordinated, multi-sectoral humanitarian intervention, focusing on the most affected and underserved areas inside Sudan and in neighboring refugee-hosting countries.

Our priorities include:

- 1. Food Security and Livelihoods:** Providing emergency food assistance, including ready-to-eat rations and food baskets.
- 2. Water, Sanitation, and Hygiene (WASH):** Providing hygiene promotion in displacement sites.



APPEAL FOR SUPPORT:

To scale up our response and reach the growing number of people in need, we urgently require additional resources. We are calling on donors, partners, foundations, and members of the international community to:

- **Provide flexible funding** that allows us to adapt to the rapidly changing needs on the ground.
- **Support in-kind donations and logistical assistance**, particularly in hard-to-reach areas.
- **Advocate for unhindered humanitarian access** and protection of civilians, in accordance with international humanitarian law.

Funding Needs (Estimated):

- Health and Nutrition: \$1.8 million
- Food Security and Livelihoods: \$3.2 million

The people of Sudan are enduring a crisis of historic proportions. They need urgent action and sustained solidarity. With your support, we can scale up life-saving interventions, protect vulnerable lives, and restore hope to millions who are caught in the crossfire of a devastating conflict.

We urge you to stand with Sudan during this critical time.

For more information, proposals, or partnership discussions, please contact:

For more information:

Tolga Baca

Programs Director

tbaca@ibc.org.tr

Sudan Office

House No 3

Block No 9 West Portsudan

Portsudan

